

## Sage X3 Team

Our Sage X3 team is a highly trained, experienced group comprised of solution architects, project managers, developers, technical and business consultants.

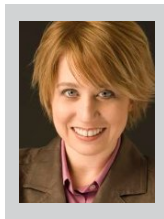
We are fully committed to Sage X3 as a partner of Sage and a partner to our clients.



**Dirk Leifer**  
**Sage X3 Practice Director**

[dleifer@netatwork.com](mailto:dleifer@netatwork.com) | (727) 897-8530

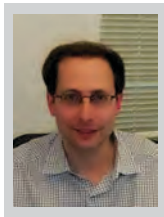
With a pedigree from and the experience of managing global IT/ERP practices at the world's leading consulting firms, Dirk has been creating value and delivering results to meaningful organizations and their respective clients for the last 20+ years. As the BU head of the Sage X3/500 practice, Dirk is leveraging his extensive sales, consulting, operational and leadership background to set the strategic direction for this practice and to execute its aggressive growth plans.



**Samantha Marshall**  
**Sage X3 Consulting Manager**

[smarshall@netatwork.com](mailto:smarshall@netatwork.com) | 1.800.719.3307 x 5810

Samantha has developed and led several software development and ERP practices over her 15 years in the industry with the top North American partners and with Sage directly. She has managed large, global projects working primarily with Sage X3 and Sage CRM. Sam consults with executive teams to define project goals, affect positive change in organizations, and ensure efficient and successful projects. With Sam's leadership, Net@Work will continue to contribute to the success of our clients and alliance partners along with the growth of Sage X3.



**Chaim Cohen**  
**Director of Solutions Architects**

[ccohen@netatwork.com](mailto:ccohen@netatwork.com) | 1.800.719.3307 x 4210

Chaim Cohen, Director of Solutions Architecture, has been working in the technology field for over two decades and has been with Net@Work since 1997. Chaim's areas of concentration are in developing integrated solutions for back office accounting, project management and warehouse management, especially for enterprise software. Chaim is responsible for modeling, designing and analyzing core process flows for back-end integration as well as defining technical requirements for custom features. His primary focus has been reengineering the functionality of our landmark ERP and CRM packages to fit clients' needs. In addition to very extensive knowledge of systems architecture, Chaim is a specialist in business process management and transforming ERP and CRM projects into successful business workflow.

# Sage X3 Team

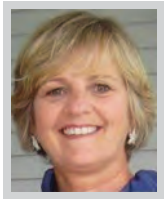
---



**Valentin Domange**  
**Director, Enterprise Group**

[vdomange@netatwork.com](mailto:vdomange@netatwork.com) | 1.800.719.3307 x 4207

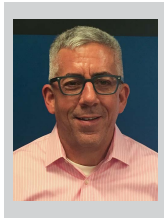
Valentin has worked in technology consulting since 2000. Prior to working at Net@Work, he worked in the finance department of a large European IT firm in Paris, France. Val manages enterprise-level projects while also nurturing Net@Work's relationship with software vendors and partners. Val has worked on various projects including ERP implementations, CRM implementations, Warehouse Management implementations as well as e-commerce web integration and large scale Business Process Requirements projects.



**Anne Brennan**  
**Sage X3 Sales Leader**

[abrennan@netatwork.com](mailto:abrennan@netatwork.com) | 1.800.719.3307 x 0823

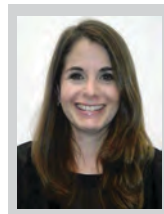
Anne Brennan joined Net@Work as the Director of Sales for Business Applications. Anne brings extensive senior management and sales experience as well as expertise across the entire line of Sage software solutions (Sage ERP, Sage CRM, Sage HRMS and Sage FAS). Her Sage X3 expertise, which includes multi-national implementations bolster Net@Work's Sage X3 practice and provide support to companies looking to modernize their core business processes.



**Tom Dieterle**  
**Senior Account Executive**

[tdieterle@netatwork.com](mailto:tdieterle@netatwork.com) | 1.800.719.3307 x1786

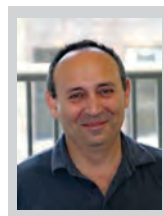
Tom has been with our key clients since coming to Net@Work in 2005. Additionally, he has been working with Sage products (ERP, CRM & HRMS) for over 20 years in areas of financial, distribution and manufacturing. His primary role is to develop relationships with our clients to make sure that things move smoothly within Net@Work and with our partners like Sage.



**Juliet Iorii**  
**Business Consultant**

[jiorii@netatwork.com](mailto:jiorii@netatwork.com) | 1.800.719.3307 x 4309

Juliet Iorii, has been working as a business consultant since 1997. Juliet received her Bachelor of Science in Industrial Engineering from Northwestern University. As a lead consultant, Juliet is responsible for numerous ERP implementations. Her scope of experience includes Financials, Distribution, Project Accounting and Multi-Currency. Juliet's extensive knowledge, experience, and outstanding report with clients continues to make her a fundamental asset in implementing innovative business solutions. Beyond Sage X3, Juliet is also knowledgeable in multiple ERP solutions and plays an integral part in Net@Work's consulting team.



**Dmitry Edelshteyn**  
**Senior Software Developer**

[dme@netatwork.com](mailto:dme@netatwork.com) | 1.800.719.3307 x 4219

Dmitry has been with Net@Work since 1997. Dmitry is involved in the design, management, building, and implementation of technical solutions in all areas of enterprise-level business applications as well as building interfaces between them. He is also involved in the design, optimization, and support of databases, as well as pinpointing and resolving data issues. Dmitry provides technical leadership to developers and consultants to help find optimal solutions for various clients' needs.

# Sage X3 Team

---



**Jack Power**  
**Business Consultant**

[jpower@netatwork.com](mailto:jpower@netatwork.com) | 1.800.719.3307 x 6078

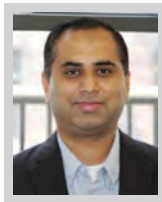
Jack Power has joined the Outside Sales Team as an Account Executive for ERP Sales in the New England region. Jack has many years of experience in new Product Sales and Account Management for Sage 100, Sage 500, and Ross ERP. Jack has worked with clients from a number of different industries including Medical Device manufacturers, Food and Beverage Manufacturers, Chemicals, Steel, and Life Sciences manufacturers. Jack has a degree in Psychology from Fitchburg State College and resides in Salem, NH.



**Iwona Andruszkiewicz**  
**Business Consultant**

[iandruszkiewicz@netatwork.com](mailto:iandruszkiewicz@netatwork.com) | (646) 293-1717

Iwona joined Net@Work team in 2008 and has been working with Sage products since 2000. She not only works on implementations of Financial and Distribution modules, but she is also an expert in 3rd party add-ons like SM Plus Service Management, eRequester, and various Macabe products. She designed and launched a training program for financial reporting application RenovoFYI. She is a go to person to assist clients in designing their financial reports.



**Vijay Kothari**  
**Business Consultant**

[vkothari@netatwork.com](mailto:vkothari@netatwork.com) | 1.800.719.3307 x 4230

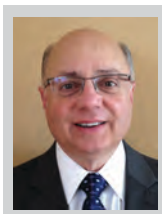
Vijay Kothari has been consulting for over 22 years. He provides leadership, lends project management and business systems consulting experience to complex ERP software implementations. Vijay has a broad range of knowledge of X3 ERP, as well as the Sage Software Suite. His vast experience extends to industries such as electronics, pharmaceutical, automotive, services, not-for-profit, consumer goods and manufacturing.



**Julia Holland**  
**Business Consultant**

[jholland@netatwork.com](mailto:jholland@netatwork.com) | (646) 293-1749

Julia is a Sage X3 Distribution & Manufacturing Consultant with specialties in lean manufacturing, shop floor management, and forecasting to optimize inventory, production resources, machine time, and labor. In addition to her Sage X3 focus and her experience within the manufacturing & distribution sector, Julia also held various industry leadership roles and managed her own consulting business before joining Net@Work. Julia lives in Pittsburgh, PA together with her family. She enjoys volunteer work as well as exploring other diverse cultures through her extensive world travels.



**Elliot Malikin**  
**Business Consultant**

[emalikin@netatwork.com](mailto:emalikin@netatwork.com) | 1.800.719.3307 x4238

Elliot joined Net@Work in 2013. He has over 25 years of experience as an ERP project manager and consultant working with software products such as Manage 2000, Infor VISUAL and Epicor 9. Before he began consulting, Elliot worked in the manufacturing arena – specializing in inventory and material control for companies like Fairchild Camera and Instruments and Hazeltine Corporation, both located on Long Island. Elliot holds a Bachelor of Science in Business Administration from the State University of New York, University at Buffalo.

# Sage X3 Team

---



**Rod Quenneville**  
**Senior Software Developer**

[rquenneville@netatwork.com](mailto:rquenneville@netatwork.com) | 1.800.719.3307 x 4502

Rod founded Apptech, an IT consulting firm in 2001 (acquired by Net@Work in 2007) and has been designing and developing software solutions since 1990. His focus is on the manufacturing and distribution industries. He specializes in productivity enhancements and integration solutions for Sage X3, and other ERP/ accounting systems. Rod is Sage Software certified as both a Pro ERP consultant and X3 ERP developer. His development language expertise includes Microsoft .Net, Visual FoxPro, and SQL.



**Aaron Green**  
**Business Analyst**

[agreen@netatwork.com](mailto:agreen@netatwork.com) | 1.800.719.3307 x 4285

Aaron has been working with the Sage Suite of business applications for the last since 2006. Aaron's specialties are installation, data conversions, data analysis and fixes and training. Over the past 6 years he has led dozens of Crystal Reports training classes and has tackled our data conversion projects. As part of the Sage X3 team, he leads training sessions in System Administrator, in addition to data structure and Crystal Reports.



**Marco Garneri**  
**Business Consultant**

[mgarneri@netatwork.com](mailto:mgarneri@netatwork.com) | 1.800.719.3307 x 4233

Marco Garneri has been working with the Sage X3 product since it's original form as Adonix Software. He was part of the pre-sales engineer team in the Italian office of Adonix and has worked on numerous international roles out of X3. Upon moving to the US in 2010 Marco has been part of the Net@Work team that supports our X3 implementations.



**Mitchell Greenwald, CPA**  
**Business Analyst**

[mgreenwald@netatwork.com](mailto:mgreenwald@netatwork.com) | 1.800.719.3307 x 4217

Mitchell brings over 20+ years of experience with a strong background supporting Financial Software. His experience includes Financial, Services, Distribution and Manufacturing companies at the audit level and also on the software implementation level. His expertise includes integrating disparate computer systems, custom reporting, SEC Audits, Litigation Support, Sarbanes Oxley engagements and corporate governance. Mitchell has extensive experience creating Crystal Reports, using TSQL and stored procedures.



**Troy Brasel**  
**Business Consultant**

[tbrasel@netatwork.com](mailto:tbrasel@netatwork.com) | 919.714.8787

Troy has over 20 years of extensive experience in Manufacturing, Operations, and Systems. He started his career with large industries implementing automation, flow manufacturing, integrated computer systems, and ERP software. He then took this training and knowledge to focus on helping small and medium sized businesses build foundation and benefit from the efficiencies of technology. He has held Executive level positions and been the champion of multiple ERP implementations before moving into the consulting world. Troy has a Bachelor of Science in Industrial Engineering and is a certified Sage X3 and Sage 500 Consultant.

# Sage X3 Team

---



**Steven Leong**  
**Business Analyst**

[sleong@netatwork.com](mailto:sleong@netatwork.com) | 646.517.6052

Steven Leong has been working with Sage products since 2012, and provides Net@Work Sage 500 and Sage X3 support. Steven graduated from Rutgers University School of Engineering with an Electrical and Computer Engineering degree. He is very knowledgeable in Microsoft Excel, Crystal Reports, SQL queries, and database management.