

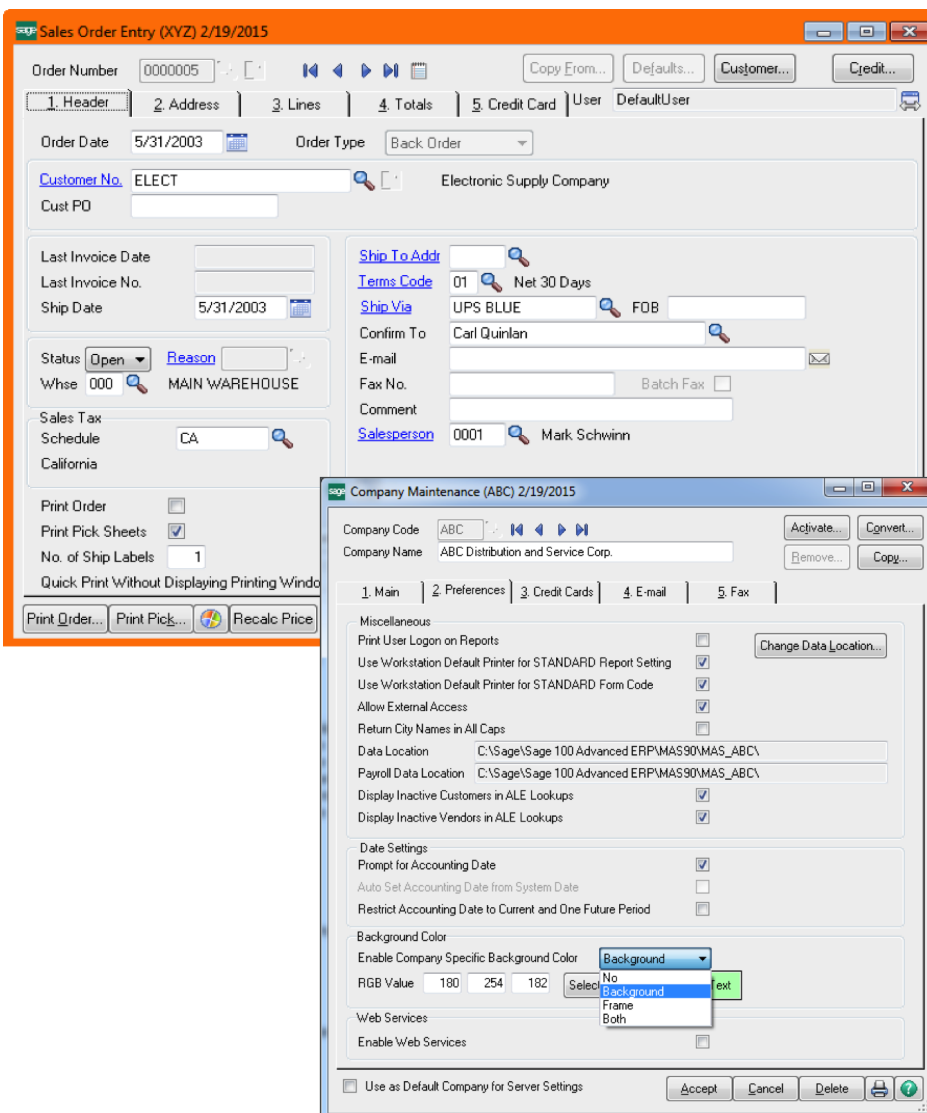
# Increase productivity, streamline workflow and processes, enhance control and security



The latest release of Sage 100 ERP features more than 60 enhancements to help increase business efficiency, productivity, and profitability. From core financials to payment processing to Sage CRM integration, the solution offers even better user experiences and ways to make managing complexity simple.

### Key enhancements

- Financials
- Payment processing
- Paperless office
- Purchasing
- CRM integration
- Affordable Care (ACA) Support
- Usability features
- User security
- Business intelligence/reporting



---

## Highlights of Sage 100 ERP 2015:

### **General Ledger, Accounts Payable, Accounts Receivable, and Bank Reconciliation enhancements**

From automated one-click GL reversal to out-of-balance notifications, new capabilities transform cumbersome financial transactions into simple tasks. Along with customizable options and the intuitive Sage 100 interface, be more efficient with your finances than ever.

### **Payment processing**

Process payments and increase liquidity with new and improved payment processing capabilities. For example, Level 3 credit card processing creates significant savings that can be passed on and reduces fees.

### **New purchasing**

Features make ordering and tracking faster and easier. For example, easy-to-copy features allow users to avoid manual POs and PO history inquiries, making it fast and easy to reference historical purchases.

### **Paperless Office enhancements**

Along with an updated version of the Amyuni printer driver, the Report Viewer provides direct access to Paperless Office reports. Printing tasks for nearly 20 reports previously not available are now included.

### **Affordable Care Act**

Specific enhancements to support Affordable Care Act (ACA) reporting requirements are featured in Sage 100 ERP, including reports to determine if an employer is required to report, the ability to include or exclude seasonal employees, and new screens for ACA employee and ACA employer maintenance.

### **Control, usability, and security**

New custom UI scripting, color coding companies, and other enhancements increase usability and control and reduce data entry errors. Improvements include new customizable user interface scripting events and improved security features that give control over access to key business data.

### **Sage CRM integration**

Sage 100 ERP features an even more robust integration to Sage CRM, making the ability to manage sales, quotes, and related customer data more transparent and efficient.

### **Enhanced reporting**

The most recent version of Sage Intelligence is now available through Sage 100 ERP, providing improved performance, reporting capabilities, and updated templates. Features include a new Report Designer, providing multiple methods for designing report layouts, one-click access, a new tool to identify missing accounts, and more. Easily report, generate KPIs, and stay up to date on the latest customer, product, and salesperson intelligence.

### **Inventory Management capabilities**

Reduce carrying costs and ensure orders are fulfilled on time. Easily manage warehouse inventory with enhanced functionality and reporting. Improve customer satisfaction with real-time inventory tools, such as Sage Inventory Advisor.

### **Sage Data Cloud**

Sage 100 ERP connects to the Sage Data Cloud through multiple web and mobile applications, allowing teams to be more productive, regardless of location or time of day. The Sage Data Cloud provides the real-time connectivity and flexibility to scale to meet needs as businesses grow.

---