



insights for the life of your business™

## MAS 90 MAS 200

Client/Server  
Client/Server for SQL Server

### MAS 90 AND MAS 200 REPORTS:

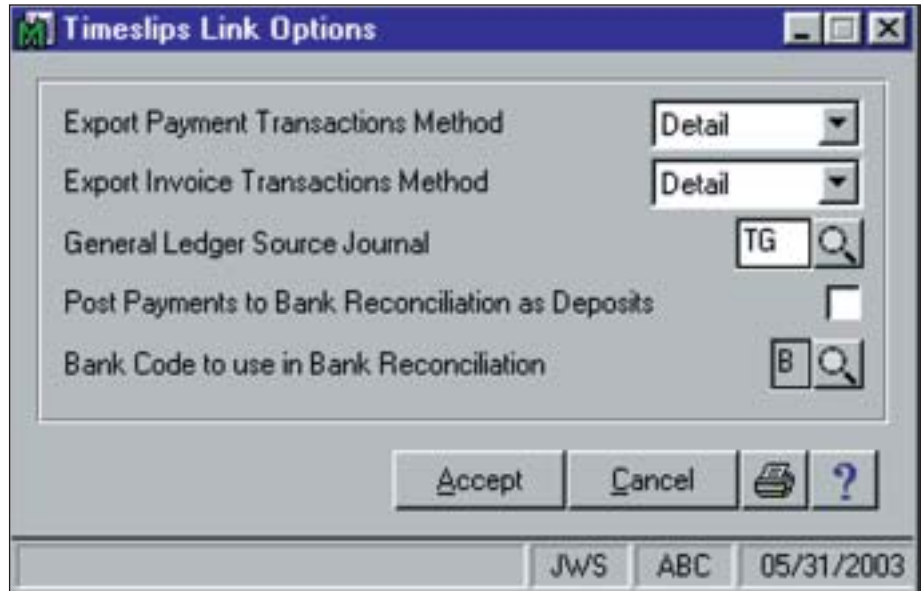
- Timeslips Transaction Register

### TIMESLIPS REPORTS:

- Fee Allocation
- Overhead Cost
- Flat Fee Performance
- Open Invoice
- Payment Performance
- Client Statements
- Tax Collection Summary
- Aged Work-in-Progress
- Time Analysis
- Productivity Analysis
- Profitability Analysis
- Budget to Actual
- Accounts Receivable
- Charges on Hold



### TIMESLIPS LINK



Timeslips, the award-winning, best-selling time and billing program, is the perfect business management tool for any service-oriented business. With its numerous features, it has become the standard, full-featured time and billing software for all professionals — lawyers, accountants, consultants, graphic designers, architects and many others — who need to track their time and bill for it.

Timeslips features include precise time and expense tracking (thanks to its built-in stopwatch timer), versatile invoicing capabilities that include a variety of billing methods, and fully customizable bill formatting and reporting that is designed to help you manage your business more profitably.

The Timeslips Link provides the necessary import and export capabilities to post general ledger transactions from Timeslips to the MAS 90 or MAS 200 General Ledger module. To facilitate setup, the chart of accounts information is exported from MAS 90 or MAS 200, then assigned to accounts in Timeslips. When the customer desires, general ledger transaction entries are exported from Timeslips to the application. This systematic flow of information can save time, eliminate errors and allow you to get the best of both worlds: the most popular time and billing software available today, teamed with the uncompromising quality of the MAS 90 and MAS 200 product lines.



## MAS 90 and MAS 200 Timeslips Link

*“In the service industry, the time value of money is the lifeblood of the firm. Timeslips is an outstanding tool that’s been serving the needs of our 600 clients for over 11 years.”*

*Nancy Griffing, Timeslips Certified Consultant  
The Griffing Network*

### TIMESLIPS LINK FEATURES

Export Chart of Accounts	The MAS 90 and MAS 200 General Ledger chart of accounts can be exported into Timeslips, to eliminate repetitive data entry.
Multiple Import Formats	General ledger transactions can be imported from Timeslips Link in summary or detail.
Updates Bank Reconciliation	Client payments can be posted to Bank Reconciliation as deposits.
Audit Capabilities	The Timeslips Link Transaction Register is printed before the information is updated to the General Ledger module.

### TIMESLIPS FEATURES

Over 80 reports including: Overhead Cost	Compares employees’ hourly values against billings.
Flat Fee Performance	Shows gain or loss when using flat fees.
Invoice	Shows amounts billed, paid and unpaid fees, costs and interest for each invoice.
Payment	Helps determine how payments are apportioned to each timekeeper.
Performance	Payments are assigned to timekeepers according to their associated billings across various periods.
Tax Collection Summary	Provides an analysis of how much was billed and paid for within each tax rate.
Aged Work-in-Progress	Shows status of each client’s unbilled charges.