

Sage 500 ERP



Allocations

Enhance Efficiency With Timely and Accurate Period Closing

Being able to deploy resources efficiently and monitor costs accurately are key factors in gaining and sustaining a competitive advantage. The Sage 500 ERP (formerly Sage MAS 500 ERP) Allocations module offers you a powerful yet flexible tool to do just that—through timely and efficient allocation and accrual processing, you can simplify and streamline period-end closing cycles.

Sage 500 ERP Allocations allows you to use the power of automation to structure virtually any allocation, distribute allocations in a variety of ways, redistribute individual transactions, and create accrual transactions. Any account or group of accounts can be allocated to one or more accounts, with full control over the accounts used in the transaction.

Formulas built into the solution enable you to perform a wide range of calculations quickly and easily, saving you time while helping to enhance the entire allocations process. With Allocations, you can use formulas to calculate a variety of allocation transactions, define global and local formulas, create an unlimited number of formulas and formula lines, and use database queries in formulas to calculate and deploy values from other databases.

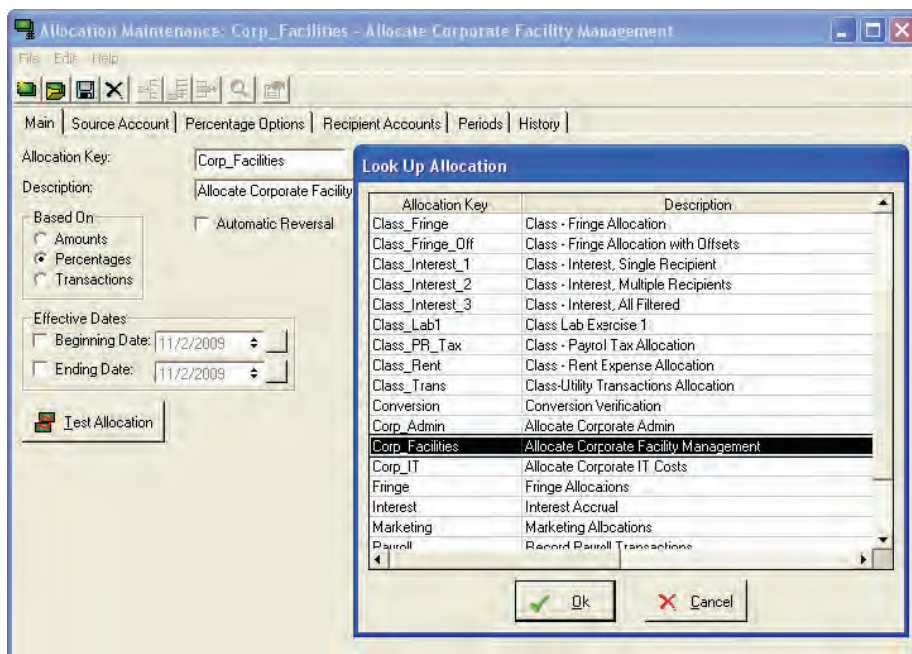
Allocations prevents errors by eliminating the need to reenter data and offers built-in processing controls that allow you to run individual allocation and accrual transactions, as well as transaction batches in specific periods, and select effective dates to restrict the lifecycle of a particular allocation. It also creates the necessary journal entries to ensure streamlined and proper posting and provides a clear picture of formula calculation through a complete audit trail.

BENEFITS

- Automate entries made in the course of a normal accounting cycle.
- Accurately measure resource consumption using individualized basis calculations.
- Create virtually any allocation transaction consisting of multiple source, recipient, and offset accounts.
- Create an unlimited number of formulas and formula lines.
- Use database queries in formulas to calculate and deploy values from other databases.
- Streamline period-end processing.
- Tier transactions in any order to control the transaction processing sequence.
- Prevent errors with built-in processing controls.

SAGE 500 ERP SOLUTIONS

- Financials and Project Accounting
- Manufacturing and Distribution
- CRM and E-Business
- Human Resources and Payroll
- Customization and Integration
- Business Intelligence



"In just my first few minutes of playing around with Sage 500 ERP, I was able to pull up reports and information it took me hours to figure out in Dynamics. I am most impressed with the Sage 500 ERP program's simplicity."

Sam Koliass
President
Boardwalk Equities, Inc.

Sage 500 ERP | Allocations

Period-End Closing

Speed up period-end processing while increasing accuracy by minimizing manual processes and offline spreadsheets.

- Create allocations and accrual transactions—such as overhead allocations, interest accruals, or bonus accruals—using a flexible and powerful formula engine.
- Calculate overhead cost pools.
- Use multiple source, recipient, and offset accounts in a single transaction.
- Process intercompany and multicurrency transactions.

Data Access

Enjoy the flexibility to integrate with a wide variety of applications.

- Integrate seamlessly with the Sage 500 ERP General Ledger.
- Incorporate budgeted values.
- Utilize data for calculations from virtually any companywide data source, including Access, Dbase, Excel®, FoxPro, SQL Server®, and any ODB- or OLE-DB-compliant database.
- Combine data from multiple data sources in a single calculation.

Calculations

Create allocations quickly with powerful calculation tools.

- Define an unlimited number of formulas and formula lines.
- Create local formulas restricted to individual allocations.
- Utilize global formulas to share common calculations among allocations.
- Use database queries to incorporate values from other systems.
- Process multiple currencies, companies, and reference codes in the calculation of allocations and journal amounts.

Error Prevention

Maintain control over your allocations with advanced security features.

- Prevent regeneration of allocations already processed or posted.
- Track processed transactions flagged as pending until posted or canceled.
- Restrict the lifecycle of individual allocations.
- View in-depth audit trail reports of calculation details, including transaction errors and warnings.

Transaction Processing

Process your allocations quickly with a workflow-oriented user interface.

- Generate individual allocations or allocations batches.
- Control the processing sequence of multiple allocation transactions.
- Utilize results of prior sequenced calculations in subsequent transactions.
- Review processed allocations and accruals prior to posting.
- Move processed transactions to the general ledger as unposted.

About Sage

Sage is a leading global supplier of business management software and services for small and mid-sized businesses. The Sage Group plc, formed in 1981, was floated on the London Stock Exchange in 1989 and now employs more than 12,600 people and supports more than 6 million customers worldwide. For more information about Sage in North America, please visit the company website at www.SageNorthAmerica.com. Follow Sage North America on Facebook, <http://www.facebook.com/SageNorthAmerica>, and Twitter, <http://twitter.com/#!/sagenamerica>.