

Sage 500 ERP



Warehouse Management

Manage Inventory Transfers, Stocking Locations, and Wave and Zone Picking With Warehouse Management

Sage 500 ERP (formerly Sage ERP MAS 500) provides industry-leading inventory and warehouse management capabilities for wholesale distributors, manufacturers, and other companies that buy, stock, sell or manufacture products. The Warehouse Management module is an extension of the Inventory Management and Inventory Replenishment modules, providing advanced features, including bin tracking, three-step inventory transfers, and both wave and zone picking.

Three-step inventory transfers utilize in-transit warehouses and replenishment logic to drive demand backward to source warehouses while tracking supplies as they move from warehouse to warehouse within the internal supply chain.

Bins are used for much more than identifying inventory locations. Bins are embedded within Sage 500 ERP to manage stock movement and inventory transactions such as receiving, picking, physical inventory counting, and even manufacturing material issues and finished goods processing. Random, fixed, temporary, and staging bins provide ample flexibility for virtually any size company, regardless of warehouse configuration.

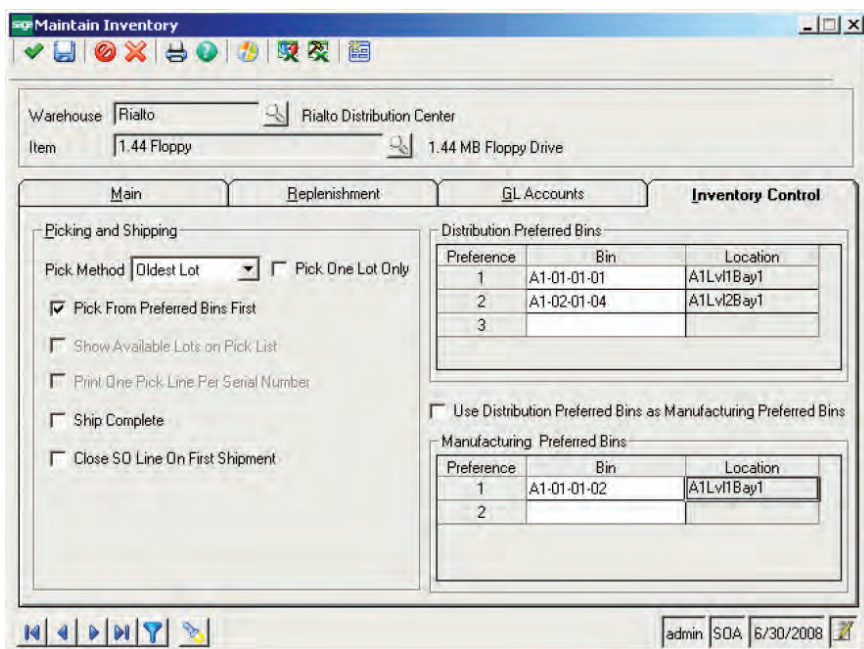
It is not efficient to pick a single order at a time in larger warehouse environments. Pickers would be running up and down aisles all day just to pick a few orders. Consequently, distributors and manufacturers with larger warehouses and more sophisticated distribution centers typically use zone or wave picking methods, which allow pickers to concentrate on items within a particular area of the warehouse. These picking methods minimize employee movement while dramatically increasing the number of orders that can be picked during each shift. Bins can be arranged using a single precedence or with separate precedence for distribution and manufacturing.

BENEFITS

- Manage inventory more efficiently with advanced warehouse management features.
- Three-step inventory transfers allow items to be replenished from other warehouses and track supplies as they move between warehouse locations within the internal supply chain.
- Advanced bin management is used extensively to manage stock movement and inventory transactions for receiving, picking, physical inventory counting, manufacturing material issues, and finished goods processing.
- Reduce costs and improve efficiency with advanced capabilities including wave and zone picking for larger warehouses and distribution centers.
- Analyze and monitor Warehouse Management data for greater insights into inventory movement.

SAGE 500 ERP SOLUTIONS

- Financials and Project Accounting
- Manufacturing and Distribution
- CRM and E-Business
- Human Resources and Payroll
- Customization and Integration
- Business Intelligence



Three-Step Transfers

Warehouse Management takes inventory transfers to another level by tracking the goods in transit between warehouse locations.

- Items may be replenished (transferred from other warehouses instead of being replenished by purchase orders or manufacturing work orders).
- Once approved, transfer orders are picked just like sales orders, with pick lists and shipping lines created.
- When the transfer shipment is posted, it is moved to the specified transit warehouse.
- When the transfer ship has been moved to the transit warehouse, it is available for receiving.
- Transfer items are received through the same process as items on purchase orders.
- Lead times can be established to define transit times between warehouse locations.
- Planned transfer orders can be generated and converted to actual transfer orders through the Inventory Replenishment or Material Requirements Planning modules.

Bin Management

Bins are built into related Sage 500 ERP activities to manage stock movement and inventory transactions.

- Specify volume, weight, and count cycle for bins.
- Define preferred bins for specific items.
- Use fixed bins for items that are always stored in a specific bin location.
- Use random bins for items that may be stocked in various bin locations within the warehouse.
- Staging bins can be used to temporarily hold items that decrease inventory but are not used in transactions. A staging bin can contain any item and multiple items simultaneously. Items in staging bins are considered on-hand for valuation but are not available for fulfillment.
- Any bin type can be defined as a temporary bin, which is automatically deleted when quantities are depleted.
- Bins are assigned to warehouse locations and zones within the warehouse
- A bin can be locked down during put-away or picking.
- Bins can be flagged to exclude quantities from available on-hand inventories. This is useful when receiving products for inspection or quarantine.
- An unlimited number of bins can be defined per warehouse.
- Inquiries and reports provide audit trails to view inventory transactions from bin to bin location.
- Pick sheets can notify warehouse personnel to empty bins during picking or to empty random bins first.
- Bins are integrated with purchase order receiving; picking, packing, and shipping; physical inventory counts; customer returns processing; and other inventory processes, such as inventory transfers and manufacturing.

Advanced Picking

Warehouse Management provides wave and zone picking for larger warehouses and distribution centers.

- Inventory items can be assigned to a warehouse location and zone within the warehouse.
- Zone picking can be used to sort pick lists by zone so that warehouse personnel pick products only within a specific zone. Picking progresses from zone to zone in an assembly-line fashion until orders are completely picked.
- Wave picking is a variation of zone picking whereby pick sheets are sorted so that multiple warehouse personnel pick items from multiple orders within the same zone. The picked items (from multiple zones) are later consolidated into individual shipments.

Business Insights

Analyze and monitor Warehouse Management data for greater insights into inventory movement.

- Organize, analyze, and graph inventory by location, movement between bins and warehouses, and more.
- Use the Data Alerts module to monitor Sage 500 ERP when items fall below their minimum or maximum quantity, are completely out of stock, or fall below their safety stock levels.
- Built-in intelligence reports provide insight into stocking levels, inventory by bin location, and transfer status.

