

Data sheet

Sage AR automation

Lower days sales outstanding (DSO). Increase your working capital. Free up staff for more strategic value-add initiatives and get paid faster and easier.



With award-winning Sage AR Automation, you can collect more cash with less effort and dramatically reduce your DSO and increase working capital. Sage AR Automation provides automated customer communications, customer self-service, and collections activity management that makes your bank balance bigger.

Outlook and Excel aren't designed to improve AR collections productivity. Outlook and Excel means manual communications and data entry. That means you don't have the necessary automation, customer self-service, or visibility to improve your AR operations.

Automate communications

Engage your customers across their preferred channels and set automated reminders as invoices become due.

Provide customer self-service

Provide convenient options for customers through built-in escalation management and convenience online payment options.

Manage activity

Automate administrative tasks and reporting to focus your team on top priorities with next best activity and goal management.

Apply cash

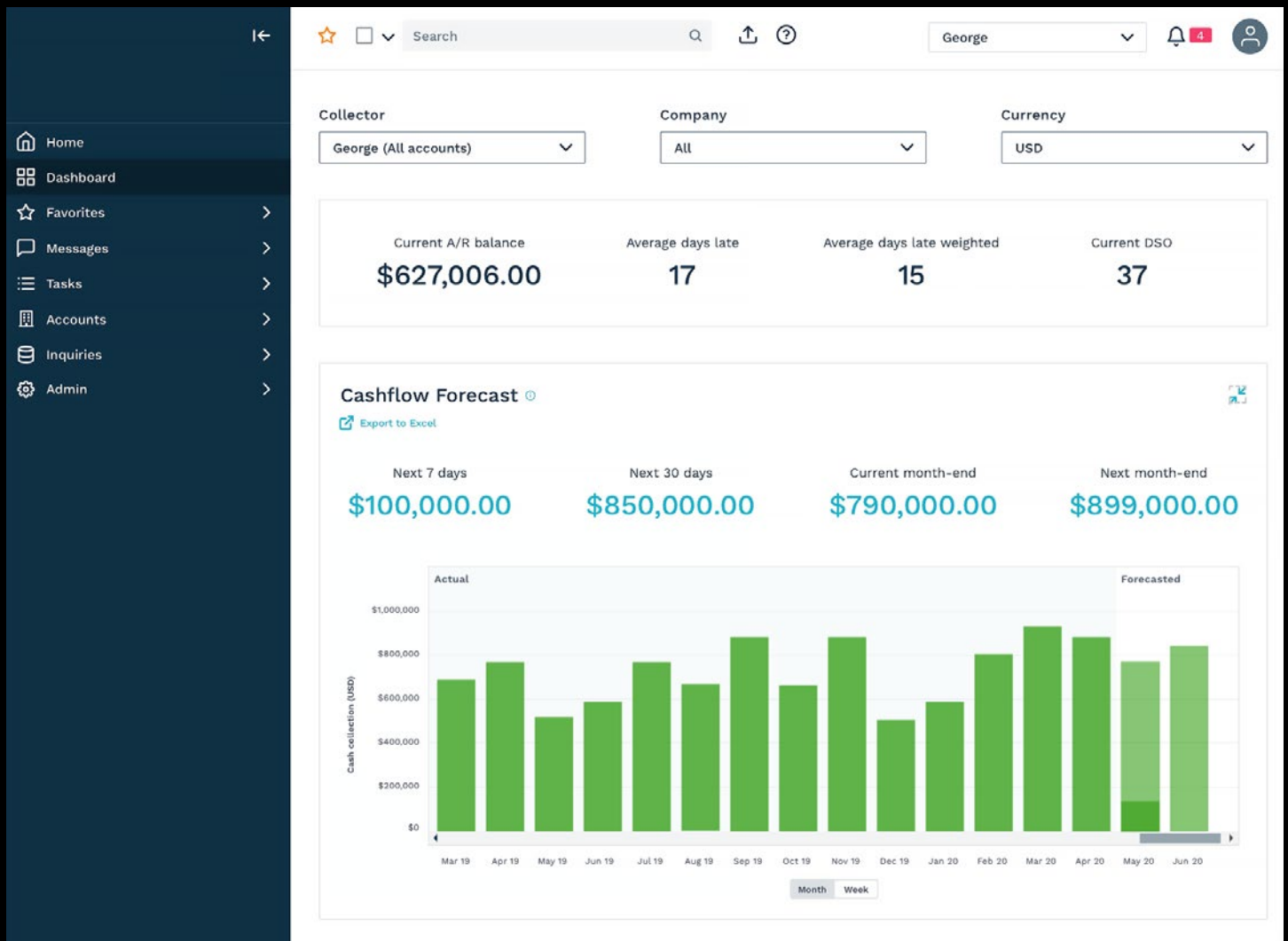
Process more payments, reduce unapplied cash, and free-up customer credit lines to keep orders, sales, and cash flowing.

Forecast and report

Provide key stakeholders with visibility into cash flow and DSO with custom reports and automated distribution.

Results achieved

- **30%+** reduction in DSO
- **3X** increase in team productivity
- **30%+** increase in cash flow



Connect key stakeholders with visibility into cash flow and DSO with custom reports and automated distribution.

Get visibility into cash inflow based on customer payment behavior while monitoring adoption and tracking usage of online accounts and payments.

Net@Work[®]

800.719.3307
sage@netatwork.com
www.netatwork.com

Sage

©2023 The Sage Group plc or its licensors. Sage, Sage logos, Sage product and service names mentioned herein are the trademarks of The Sage Group plc or its licensors. All other trademarks are the property of their respective owners.